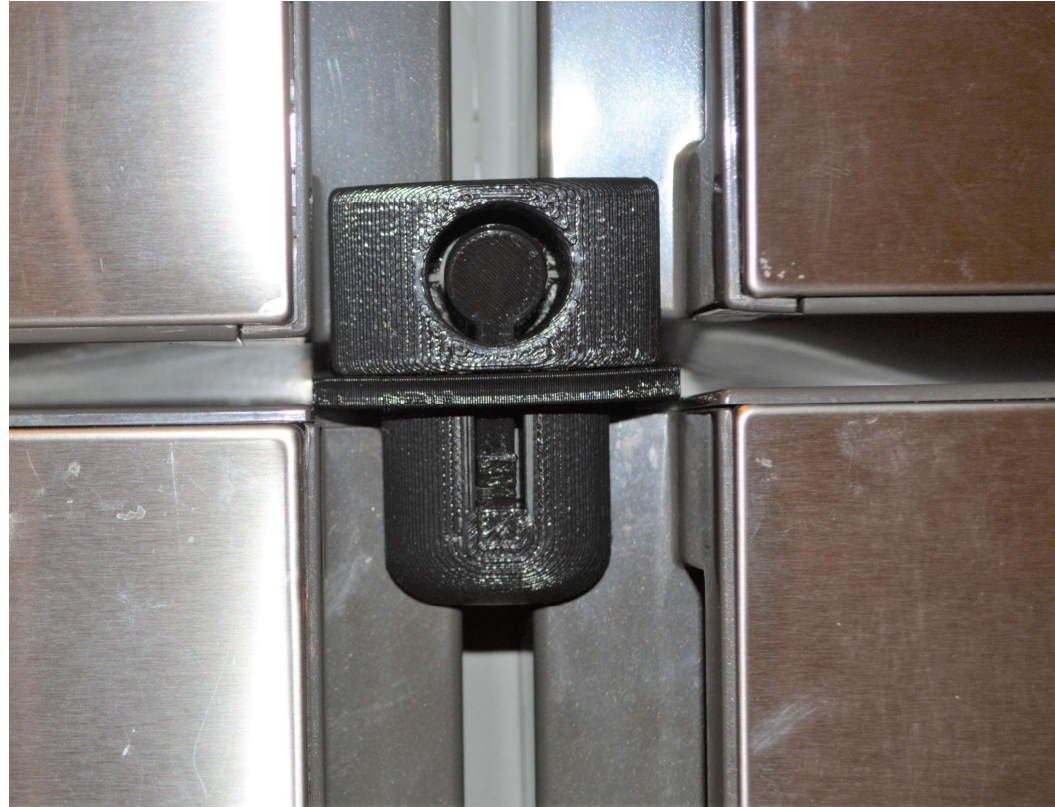




# Installation Instructions



For Haier and Hisense  
HRQ16 Refrigerator





# Installation Instructions

## **CAUTION:**

Under reasonable conditions, the Fridge Fixer® will keep your refrigerator doors closed while the vehicle is in motion. But, it will not prevent the refrigerator contents from shifting internally. Please load your refrigerator carefully to minimize shifting during transport, and use caution when opening as items may be poised to fall.



**Reimagine Rethink Reinvent LLC**

*Solving problems from every angle...*



# Installation Instructions

The following pieces will be included in your kit:



**Reimagine Rethink Reinvent LLC**  
*Solving problems from every angle...*



# Installation Instructions

## **CAUTION:**

Some refrigerators will shut off the compressor if the refrigerator doors are left open for an excessive amount of time. The refrigerator may not inform you that it has entered this error state, and will simply cease to cool until it is reset.

To avoid this undesired behavior it is best to **disconnect the refrigerator from power before installing the Fridge Fixer®**. Please pull the plug, or trip the circuit breaker before proceeding.



**Reimagine Rethink Reinvent LLC**

*Solving problems from every angle...*



# Installation Instructions

## ***CAUTION:***

Since this Fixer design is mounted adhesively, it is important to not attempt to adhere the Fixer on a running refrigerator. If the refrigerator is running, the mounting area for the Fixer may be cold, and have a subtle layer of condensation. This condensation will seriously compromise the adhesive strength and should be avoided.

**Please power off the refrigerator and allow the refrigerator to come to room temperature before attempting to install the adhesive Fridge Fixer.**



**Reimagine Rethink Reinvent LLC**

*Solving problems from every angle...*



# Installation Instructions

## **CAUTION:**

The adhesives used in this installation are **VERY** strong, and will bond almost instantly with any surface treated with the Adhesion Promoter. Please practice the installation (per these instructions) with the adhesive covered as many times as needed to be comfortable with the procedure. The Platform will bond on contact and it will be VERY difficult to remove the platform and all residual adhesive once adhered, and the Platform must be replaced.



**Reimagine Rethink Reinvent LLC**

*Solving problems from every angle...*



# Installation Instructions

## *Test Fitting*

### 1.1

Although this Fixer is designed specifically for this Refrigerator, it is a good idea to run through the installation procedure with the adhesive covered just to ensure proper fit before adhering the platform.

Manufacturers can sometimes change the specific design of a refrigerator without changing the model number. So, there's always a small chance that there will be a fit issue with your Fixer.

If you have any problems with the fit of your Fixer, please contact us directly for prompt resolution.



**Reimagine Rethink Reinvent LLC**  
*Solving problems from every angle...*





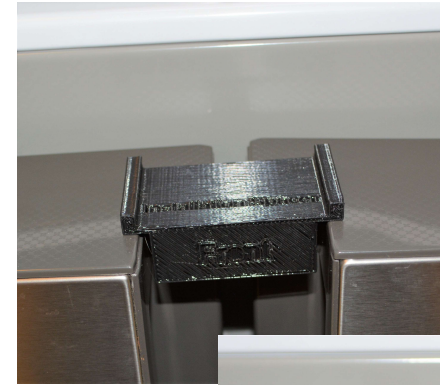
# Installation Instructions

## *Test Fitting*

### 1.2

Place the installation spacer on the closed freezer doors. **With the adhesive covered**, place the Platform on the installation spacer and press against the refrigerator frame.

Close the top doors and ensure that the Platform does not contact the doors.



**Reimagine Rethink Reinvent LLC**  
*Solving problems from every angle...*





# Installation Instructions

## *Test Fitting*

### 1.3

While pressing the Platform against the refrigerator frame, insert the Door Block into the Platform.

The Door Block should be able to be inserted and removed from the Platform and should fit against the doors.

It is normal for there to be minimal movement of the Doors when the Block is in place.

If you have any kind of fit issue, please stop and contact us for resolution BEFORE applying the adhesive in the following steps.



**Reimagine Rethink Reinvent LLC**  
*Solving problems from every angle...*



# Installation Instructions

## *Surface Preparation*

# 2.1

The Alcohol Wipe is flammable, so please do not smoke when applying, and do not apply near an open flame... Dispose of the used wipe properly.

Open all doors (and drawer if applicable) and clean the Refrigerator Frame where the Fridge Fixers® are to be mounted with the supplied alcohol wipe.

Wait for the alcohol to evaporate before proceeding.



**Reimagine Rethink Reinvent LLC**  
*Solving problems from every angle...*



# Installation Instructions

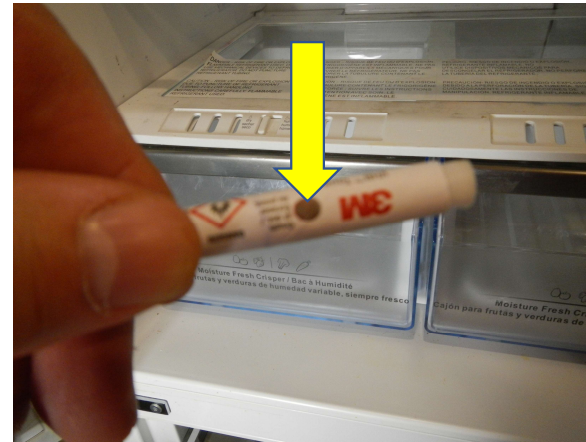
## *Surface Preparation*

# 2.2

The Adhesion Promoter is flammable, so please do not smoke when applying, and do not apply near an open flame... Take care to avoid contact with the chemical.

Squeeze the Adhesion Promoter tube at the large black dot to release the tube contents to the applicator tip.

Squeeze just enough to wet the applicator tip. If you squeeze too hard, the contents will drip.



**Reimagine Rethink Reinvent LLC**  
*Solving problems from every angle...*



# Installation Instructions

## *Surface Preparation*

### 2.3

Apply the supplied Adhesion Promoter to the Platform mounting area.

A thin layer of the Adhesion promoter is all that is required.

Please allow the promoter to dry for a minimum of 1 minute before proceeding to the next step.

Please dispose of the used applicator tube properly.



**Reimagine Rethink Reinvent LLC**  
*Solving problems from every angle...*



# Installation Instructions

## 3.1

Peel the covering completely off the adhesive strip.



**Reimagine Rethink Reinvent LLC**  
*Solving problems from every angle...*

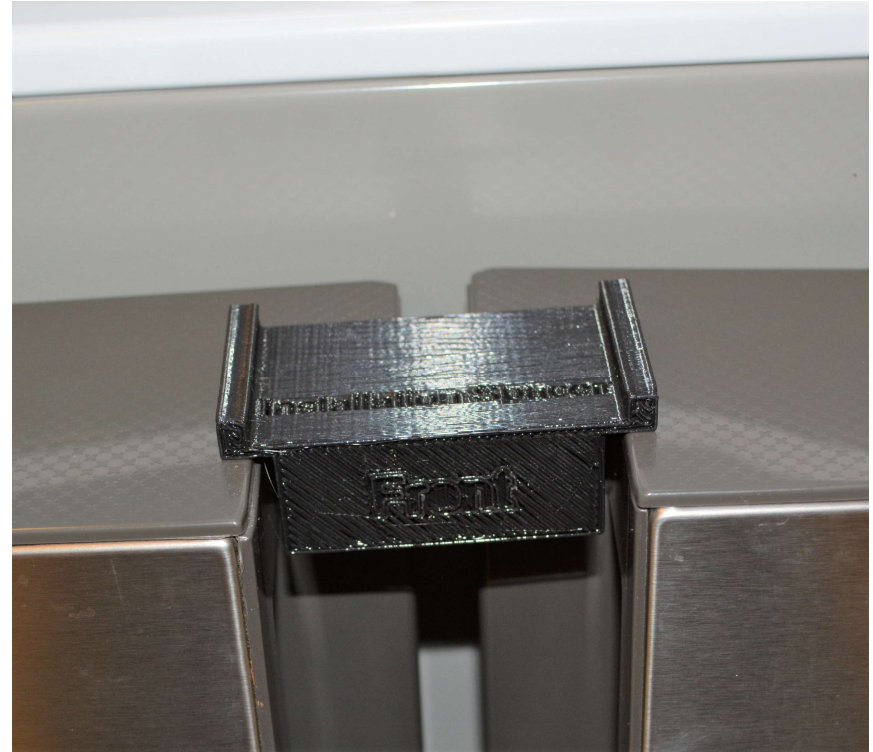




# Installation Instructions

## 3.2

Open the top refrigerator doors. Leave the bottom doors closed.



**Reimagine Rethink Reinvent LLC**  
*Solving problems from every angle...*



# Installation Instructions

## 3.3

Place the installation spacer into the gap on the lower doors, and let it rest on top of the lower doors.



**Reimagine Rethink Reinvent LLC**  
*Solving problems from every angle...*





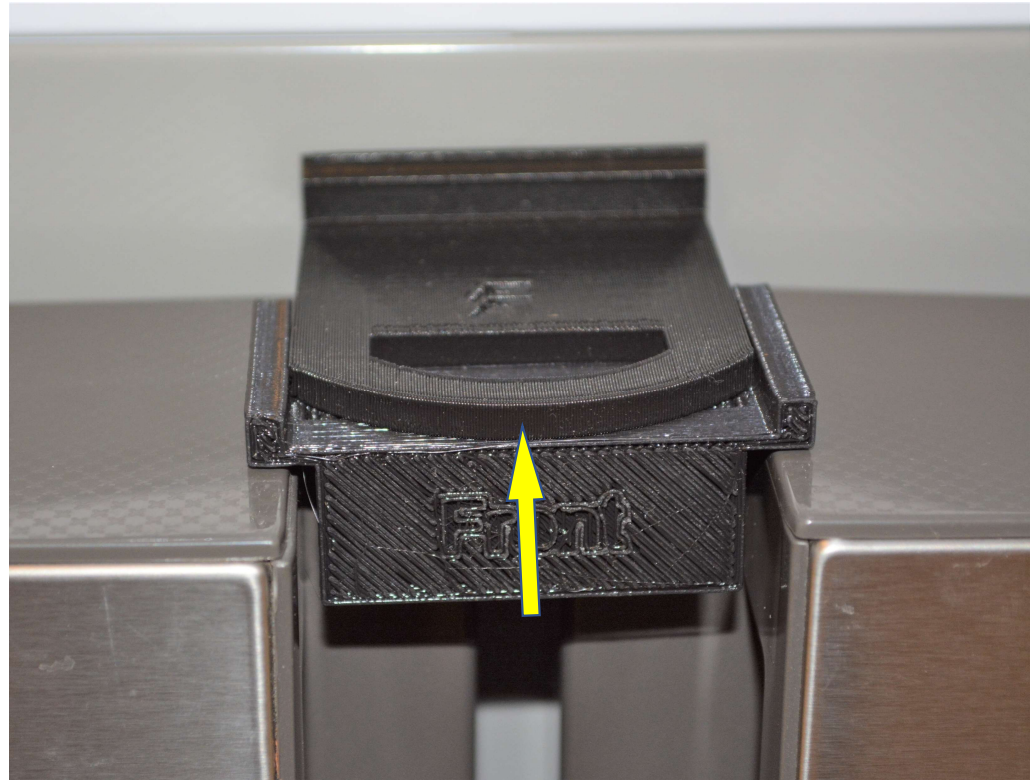
# Installation Instructions

## 3.4

Place the Platform (with the FF Logo on top) on the installation spacer with the adhesive separated from the refrigerator frame.

Be sure the Platform is resting completely flat in the installation spacer before proceeding.

Keeping the Platform flat on the Installation Spacer, slide the Platform towards the refrigerator and firmly press it towards the refrigerator frame to adhere the Fixer.



**Reimagine Rethink Reinvent LLC**  
*Solving problems from every angle...*



# Installation Instructions

## 3.5

Remove the spacer from under the Platform by opening the freezer doors.



**Reimagine Rethink Reinvent LLC**  
*Solving problems from every angle...*



# Installation Instructions

## 3.6

Allow the adhesive to set for 24 hours minimum before installing the block and using the Fridge Fixer®.

This 24 hour period will allow the adhesive to reach 90% of the full bond strength. Full bond strength will be achieved at 72 hours after installation.



**Reimagine Rethink Reinvent LLC**  
*Solving problems from every angle...*



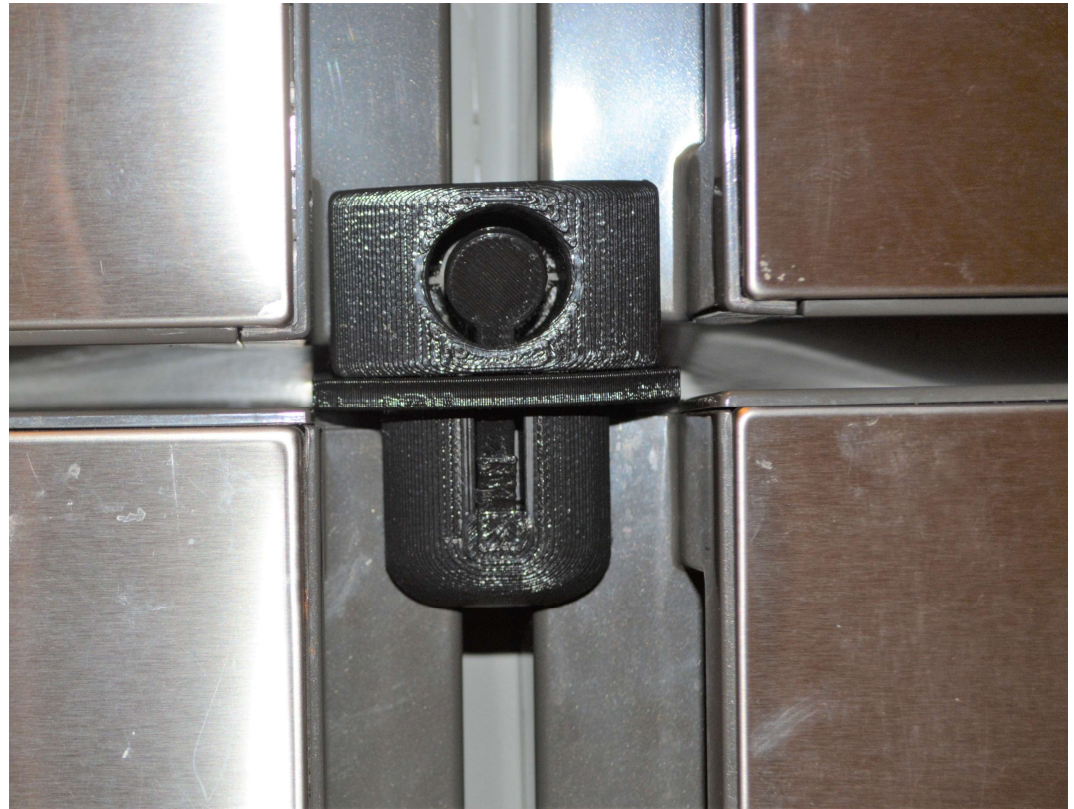


# Installation Instructions

## 3.7

Insert Door Block into Frame.

It is normal for doors to move slightly when pulled. Frame should return doors to fully closed when door is released.



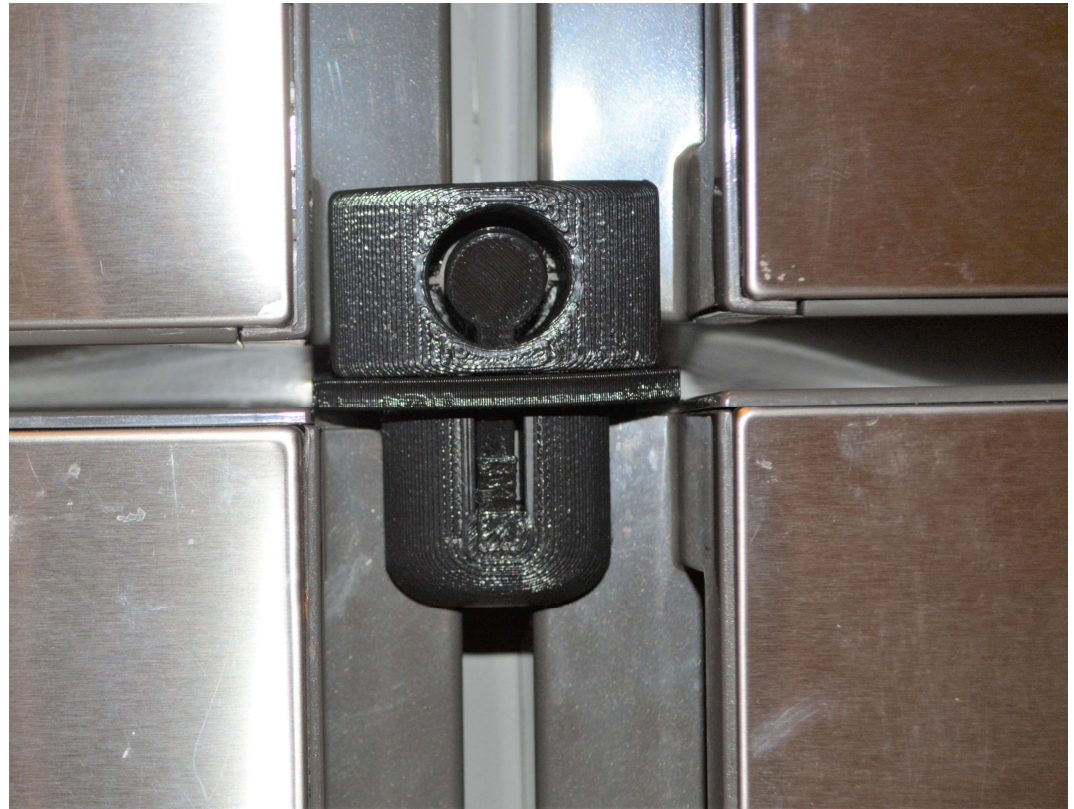
**Reimagine Rethink Reinvent LLC**  
*Solving problems from every angle...*



# Installation Instructions

If you have any questions or concerns with your Fridge Fixer, please contact us at:

[Orders@Recubed.Solutions](mailto:Orders@Recubed.Solutions)



**Reimagine Rethink Reinvent LLC**  
*Solving problems from every angle...*



# Use Instructions

# 1

To open the doors, place a finger into the door block release hole (pressing the release lever), and slide the block out of the Platform.



**Reimagine Rethink Reinvent LLC**  
*Solving problems from every angle...*



# Use Instructions

## 2

The Door Block should store magnetically to the front of the doors when not in use.

Please note that not all refrigerator doors hold magnets. If your refrigerator doesn't please contact us about sending you a "Landing Pad" that will enable you to store the Door Block magnetically on most any surface.



**Reimagine Rethink Reinvent LLC**

*Solving problems from every angle...*





# Use Instructions

# 3

To store the refrigerator unpowered, insert the door block in the platform with all the doors open. This will prevent the doors from sealing and allow the refrigerator to completely dry – this prevents mold and mildew from forming.



**Reimagine Rethink Reinvent LLC**  
*Solving problems from every angle...*